

Every White Sandian, a success story

School Leader's Sharing

P4 School-Parents Engagement & Communication Session (SPECS)

2 February 2024



Our School Leaders

Growth Mindset @ WSPS



**Ms Audrey Wong
Principal**



**Ms Rezina Khan
Vice-Principal**



**Ms Lina Tiong
Vice-Principal
(Admin)**



Every White Sandian, a success story

P4 Parents' voices

What are the skills/competencies your child needs to develop to be successful?



Every White Sandian, a success story

Broad shifts in Singapore's education system

Every White Sandian, a success story

Broad shifts in Singapore's Education System

THE PSLE CHANGES ARE PART OF A BIGGER STORY

Over the years, we have been fine-tuning the education system to help our students discover and develop their strengths and interests, while moving away from an over-emphasis on academic results.

Our PSLE scoring changes aim to:

- Reduce fine differentiation at a young age
- Recognise students' level of achievement, regardless of how their peers have done



Moving away from an over-emphasis on academic results, focusing on a child's holistic development.

Adjusting School-based Assessment Structures

P1

> No examination, but weighted assessments are conducted throughout the year

P2

> Weighted assessments throughout the year and year-end exam

P3-P6

> Mid-Year Exam (MYE) and year-end exam, in addition to weighted assessments throughout the year

Secondary level

> Most schools conduct Mid-Year Exam (MYE) and year-end exam, in addition to other weighted assessments throughout the year

P1 & P2

> Removal of all weighted assessments (including P2 year-end exam)

S1

> Removal of Mid-Year Exam (MYE)

From P3 to S4/5

> Schools to conduct no more than one weighted assessment per subject, per school term. This is in addition to Mid-Year Exam (MYE) and year-end exam at levels where this is applicable

P3, P5, S3

> Removal of Mid-Year Exam (MYE)



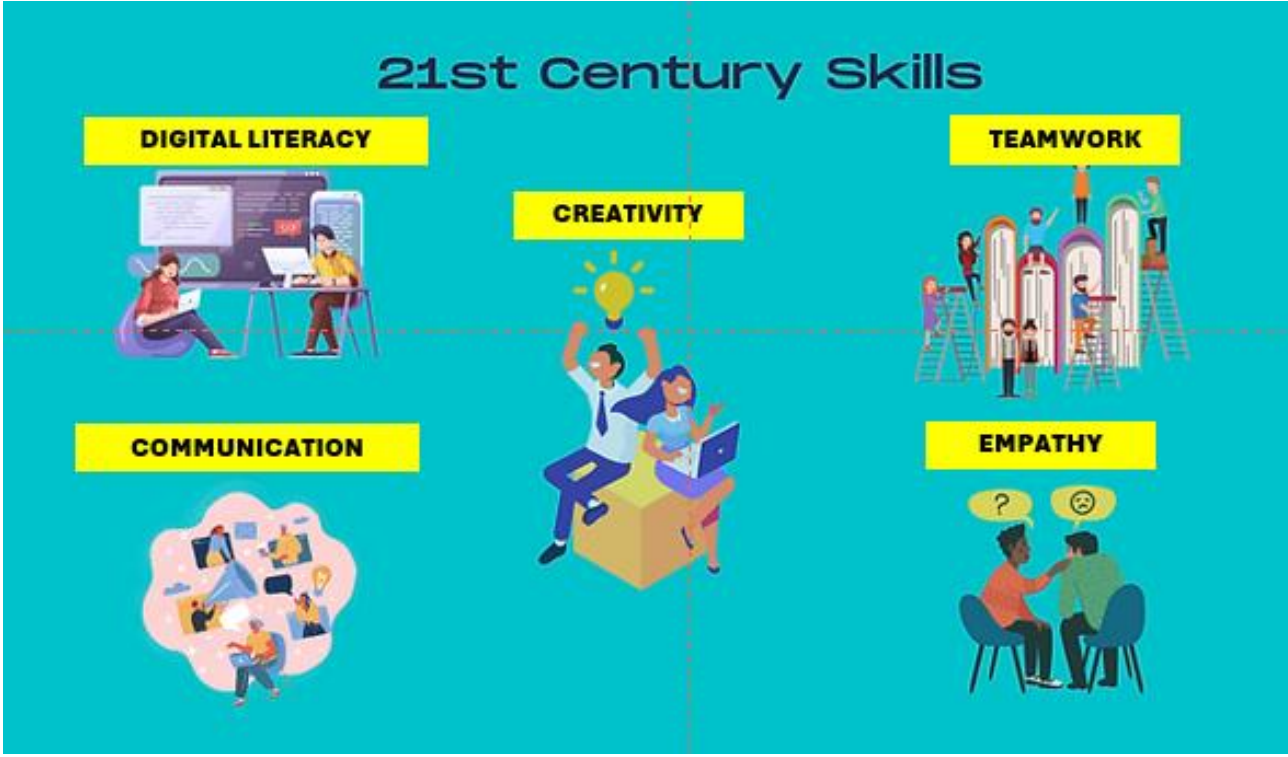
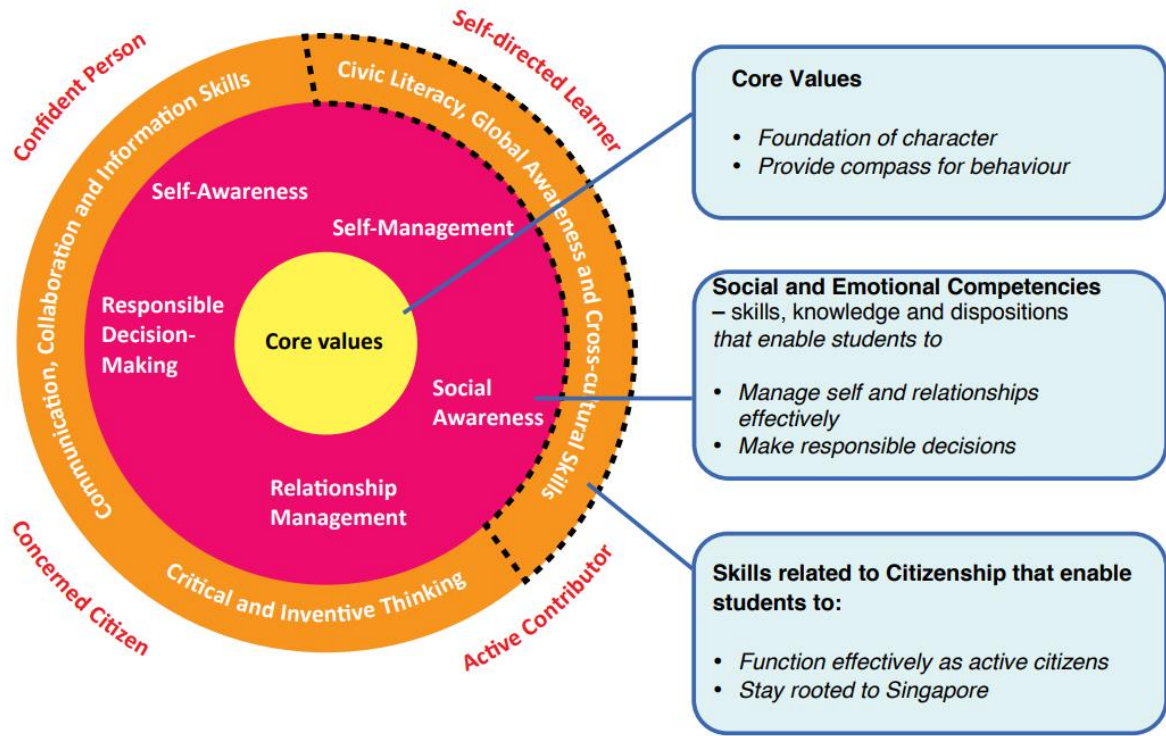
Adjusted school-based assessment structures provide autonomy for schools to provide opportunities for student-initiated learning

Every White Sandian, a success story



Broad shifts in Singapore's Education System

MOE's framework for 21st Century Competencies and Student Outcomes



Every White Sandian, a success story

Broad shifts in Singapore's Education System

Growth Mindset @ WSPS 

Initiatives announced in 2023

1 Every Student a Creator, Connector and Contributor

- Enhanced 21CC Framework and Priority Emerging 21CC (E21CC)

2 EdTech as a Capability Multiplier

- "Transforming Education through Technology" Masterplan 2030
- Strengthening Student Cyber Wellness

Enablers

Schools can decide when to implement and which enablers to tap on.



From the School as our World, to the World as our School



- School White Area and Canteen Grant
- Additional funding for flexible furniture
- Establishment of Partnerships Engagement Office



Staff Capacity & Capabilities

- Teacher Growth Model (2024)

Every White Sandian, a success story





WSPS alignment to education shift



Every White Sandian, a success story

WSPS alignment to education shift

Learning to collaborate respectfully with peers through effective communication

WE ALL HAVE A PART IN MAKING THE CLASS A KIND AND CARING PLACE.



EVERYONE HAS STRENGTHS TO CONTRIBUTE.
WHAT IS YOURS?



Every White Sandian, a success story



WSPS alignment to education shift

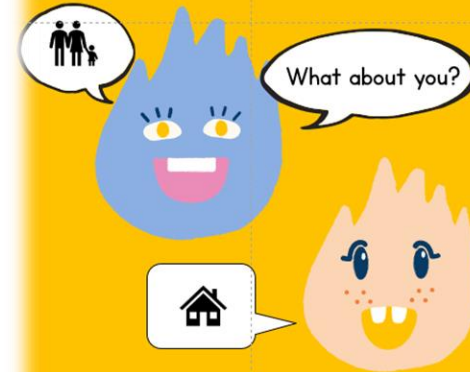
Developing passionate learners with exemplary character

Instilling positive routines for students to develop good habit of respectful behaviour and responsible care for environment

G.E.A.R. - Setting the tone for a positive experience
U.P. – Useful Practices to set the routine for learning

1. **G**reet
2. **E**nvironment: **E**veryday **R**esponsibility
3. **A**ttendance, **A**ttire check & **A**ttention
4. **R**eview & **R**eject on Learning

3. I HOPE WE WILL RESPECT ONE ANOTHER.



I will remember to use respectful language when talking to my friends online and offline.

I will take turns to speak in a group discussion.

I will try to understand my friend's opinion first before getting angry.

Clear and explicit learning of positive behaviour expected of White Sandians

Every White Sandian, a success story



WSPS alignment to education shift

Enhancing students' resilience in support of their well-being

What are you worried about as you start the new year?
[Choose as many as you like.]

- Difficulty making new friends
- Not getting along well with friends
- Learning new subjects/skills
- Too much schoolwork
- Not meeting my own expectations
- High expectations from parents/teachers
- Quarrels at home
- Money issues at home
- I am not worried about anything



You are not alone! Please talk to your parents and teachers if you need to speak to someone.

Praise and affirmation as a strategy to develop students' Growth Mindset

Termly Check-in Surveys



Heart-to-heart Conversations



Every White Sandian, a success story



Subject-based Banding

Every White Sandian, a success story



Subject-Based Banding Process



Students can take a **mix of standard and foundation subjects** through SBB at P5 and P6.

This would allow your child to:

- Stretch their potential in subjects they are strong in.
- Build up their understanding in subjects they need more help with.

Primary 4

- Your child sits for the school exams.
- School recommends a subject combination based on their exam results at the end of the year.
- You will need to fill up an option form to indicate your child's preferred subject combination.

Primary 5

- Your child takes their preferred subject combination.
- School assesses your child's ability to cope with the subjects at the end of the year.
- Adjustments to the subject levels are made if needed.

Primary 6

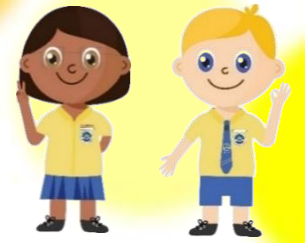
- Your child takes the subject combination recommended by the school and sits for the Primary School Leaving Examination (PSLE).
- Your child's progression to secondary level depends on their PSLE results.
- If your child excels in certain subjects, they can pursue higher level options in secondary school.



Every White Sandian, a success story



Subject-based Banding Combinations



1. If your child passes 3 or more subjects in Primary 4, your child will be offered the 4 standard subjects:

- English Language
- Mother Tongue Language
- Mathematics
- Science

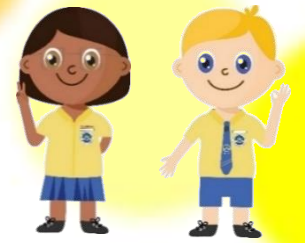
2. Higher Mother Tongue Language may also be offered if your child passes all 4 subjects and does very well for Mother Tongue Language.



Every White Sandian, a success story



Subject-based Banding Combinations



3. Students who pass 2 subjects or less will be offered the following choices:

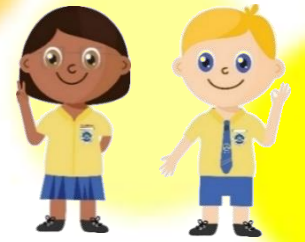
- 4 standard subjects
- 3 standard subjects + 1 foundation subject
- 2 standard subjects + 2 foundation subjects
- 1 standard subject + 3 foundation subjects
- 4 foundation subjects

4. Taking subjects at the foundation level is not a disadvantage for your child. It will help them to build up the fundamentals for the subjects and better prepare them for progression to secondary school.





PSLE Scoring System



AL scores for subjects in:

Standard Level

Foundation Level

AL	Raw mark range
1	≥90
2	85-89
3	80-84
4	75-79
5	65-74
6	45-64
7	20-44
8	<20

Grades for Foundation subjects	Foundation raw mark range	Equivalent Standard level AL
A	75-100	6
B	30-74	7
C	<30	8



Official (Open / Non-sensitive)

Every White Sandian, a success story



PSLE Posting System (starting with 2024 Sec 1 cohort)



Changes to Secondary 1 posting

- Starting from the 2024 Sec 1 cohort, Pri 6 students will be admitted to Sec 1 through three posting groups
- Posting groups are assigned based on PSLE scores, mapped from existing PSLE score ranges for Express, N(A) and N(T) streams

PSLE Score	Posting Group	Subject level for most subjects
4-20	3	G3
21 and 22	2 or 3	G2 or G3
23 and 24	2	G2
25	1 or 2	G1 or G2
26 - 30 (with AL 7 in EL and MA)	1	G1

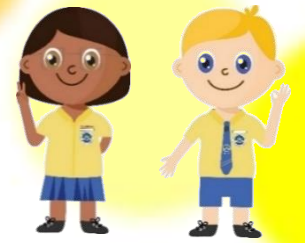
Infographic: Rafa Estrada Source: Ministry of Education, Feb 28, 2023





PSLE Scoring System

Secondary School HMTL Criteria



Eligibility Criteria for Sec School HMTL

- An **overall PSLE Score** of 8 or better

OR

- An **overall PSLE Score** of 9 to 14 (inclusive); **and** attained AL 1 / AL 2 in MTL or Distinction / Merit in HMTL

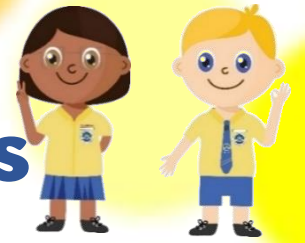


Official (Open / Non-sensitive)
Every White Sandian, a success story



PSLE Scoring System

MTL Exemption & Asian /Foreign Languages



Pupils **exempted from MTL**, due to extenuating circumstances, will be assigned an MTL score between AL 6 to 8 so they have a PSLE score comprising four subjects, for the purposes of S1 Posting.

Their assigned MTL score will:

- Take reference from peers with similar scores for English, Mathematics, and Science.
- Maintain parity of treatment with students who take Foundation MTL (who will score between AL 6 to 8)



Every White Sandian, a success story

Home-school Partnership

Every White Sandian, a success story

Home-school partnership

IT TAKES A VILLAGE

MOE to partner parents as they seek to strengthen relationships with their children

Support our **Parent Support Groups** to work closely with schools



Character: good qualities of a person

Moral Character
Be a good person!

Fair Love
Courage Empathy
Perseverance
Compassion
Respect Integrity
Trustworthy

Performance Character
Try your best at school!

Scholarship Integrity
Leadership Community
Dignity Peace
Perseverance Responsibility
Social Justice

Civic Character
Be a good citizen!

Volunteer
Make a difference!
Do the right thing
Give back!
Take care of the environment
Help others!
Do your part!

Common challenges faced by Middle Primary students

Short attention span

**Lack of self-discipline
for learning**

**Working well
with others**

**Independence for
self-management**

**Increased
academic rigour**



Frequently Asked Questions

Learning experiences

- **Classing in P5**
- **Direct School Admission (Preparation)**

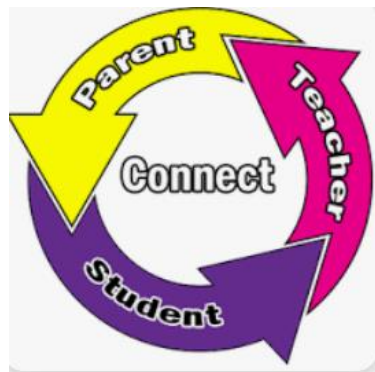
Curriculum and Assessment

- **Modes of Weighted Assessment**
- **Support (lower progress) and Enrich (higher progress) Programmes**





White Sands TEAM



Every White Sandian, a success story

