

Every White Sandian, a success story

School Leader's Sharing

**P5 School-Parents
Engagement &
Communication
Session
(SPECS)**

16 February 2024





Welcome P5 Parents!



Sharing outline

✓ Sharing by School Leader

- Broad shifts in Singapore's Education System
- WSPS alignment to education shift
- PSLE Scoring & Posting System
- Sec School Full Subject-Based Banding
- Direct School Admission



Every White Sandian, a success story

Our School Leaders

Growth Mindset @ WSPS



**Ms Audrey Wong
Principal**



**Ms Rezina Khan
Vice-Principal**



**Ms Lina Tiong
Vice-Principal
(Admin)**



Every White Sandian, a success story

Broad shifts in Singapore's education system

Every White Sandian, a success story

Broad shifts in Singapore's Education System

THE PSLE CHANGES ARE PART OF A BIGGER STORY

Over the years, we have been fine-tuning the education system to help our students discover and develop their strengths and interests, while moving away from an over-emphasis on academic results.

Our PSLE scoring changes aim to:

- Reduce fine differentiation at a young age
- Recognise students' level of achievement, regardless of how their peers have done



Moving away from an over-emphasis on academic results, focusing on a child's holistic development.

Adjusting School-based Assessment Structures

P1

> No examination, but weighted assessments are conducted throughout the year

P2

> Weighted assessments throughout the year and year-end exam

P3-P6

> Mid-Year Exam (MYE) and year-end exam, in addition to weighted assessments throughout the year

Secondary level

> Most schools conduct Mid-Year Exam (MYE) and year-end exam, in addition to other weighted assessments throughout the year

P1 & P2

> Removal of all weighted assessments (including P2 year-end exam)

S1

> Removal of Mid-Year Exam (MYE)

From P3 to S4/5

> Schools to conduct no more than one weighted assessment per subject, per school term. This is in addition to Mid-Year Exam (MYE) and year-end exam at levels where this is applicable

P3, P5, S3

> Removal of Mid-Year Exam (MYE)

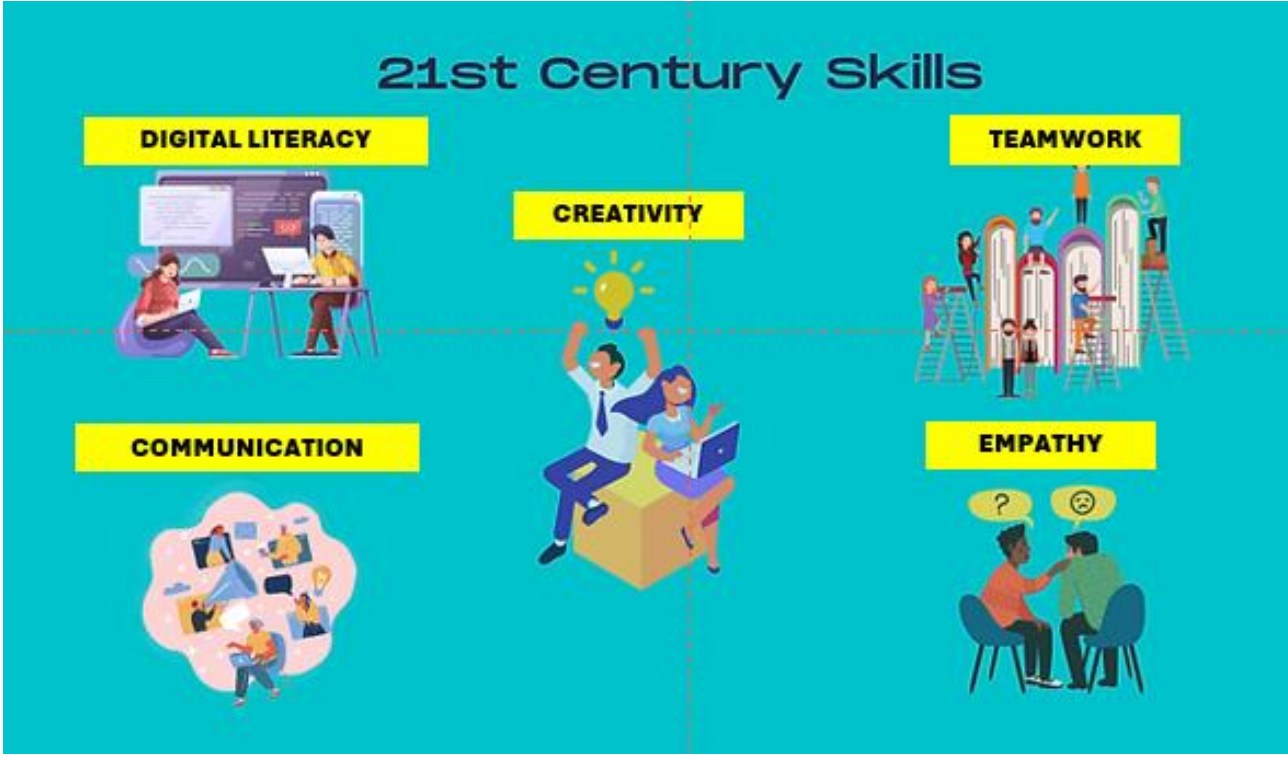
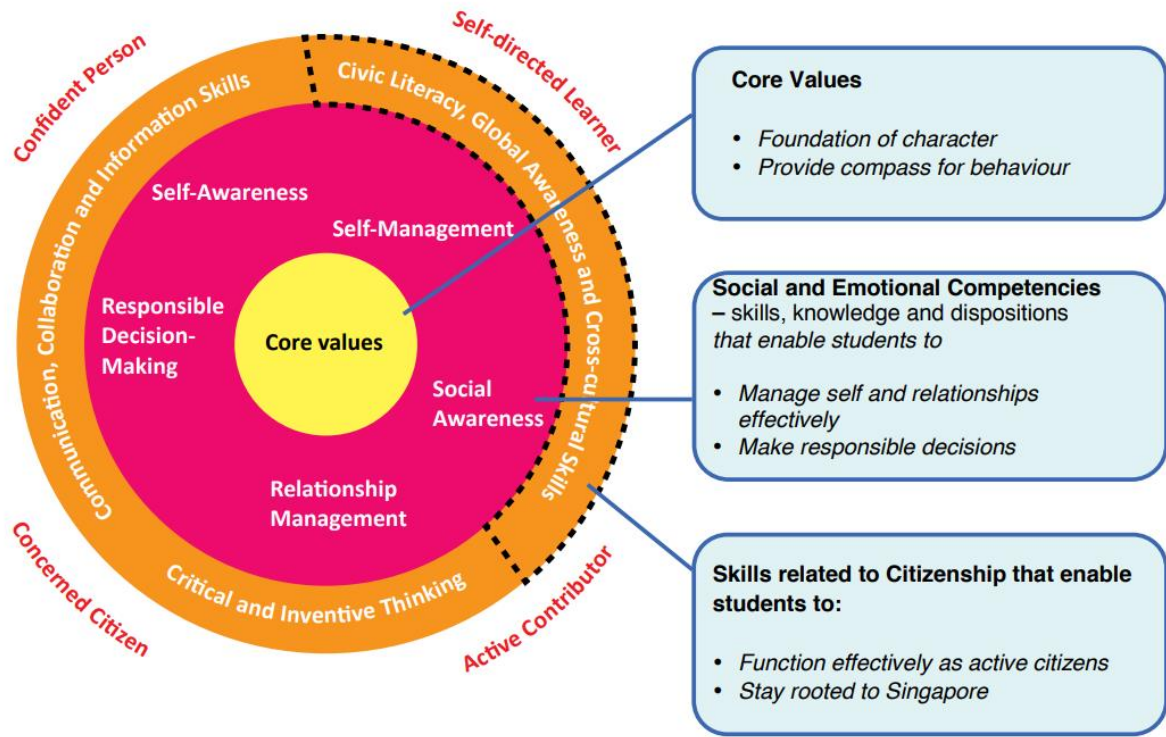


Adjusted school-based assessment structures provide autonomy for schools to provide opportunities for student-initiated learning



Broad shifts in Singapore's Education System

MOE's framework for 21st Century Competencies and Student Outcomes



Every White Sandian, a success story

Broad shifts in Singapore's Education System

Growth Mindset @ WSPS 

Refreshing our Curriculum Character and Citizenship Education 2021 (CCE 2021)

1

Making CCE more relevant and applicable

- CCE will be further integrated into lessons and activities, such as CCAs, camps and outdoor activities.
- Students will go through key student development experiences beyond the classroom from primary to pre-university, including new cohort Learning Journeys.

2

Strengthening mental health and cyber wellness education

- Students will be explicitly taught about mental health. Time spent on discussion on cyber wellness issues will be increased by 50%, on average.
- All schools will establish a peer support structure by 2022.

3

Greater emphasis on teaching of moral values in primary schools

- Students will be taught moral values through cultural stories, songs, idioms and proverbs unique to each Mother Tongue Language.
- Form Teacher Guidance Period will be broadened to include topics related to National Education and citizenship, which are better taught in a multi-cultural setting.

Growing need to increase awareness of mental health matters while developing greater resilience in students

Every White Sandian, a success story



Broad shifts in Singapore's Education System

Growth Mindset @ WSPS 

Initiatives announced in 2023

1 Every Student a Creator, Connector and Contributor

- Enhanced 21CC Framework and Priority Emerging 21CC (E21CC)

2 EdTech as a Capability Multiplier

- "Transforming Education through Technology" Masterplan 2030
- Strengthening Student Cyber Wellness

Enablers

Schools can decide when to implement and which enablers to tap on.



From the School as our World, to the World as our School



- School White Area and Canteen Grant
- Additional funding for flexible furniture
- Establishment of Partnerships Engagement Office



Staff Capacity & Capabilities

- Teacher Growth Model (2024)

Every White Sandian, a success story



WSPS alignment to education shift

Growth Mindset @ WSPS



WSPS alignment to education shift



Every White Sandian, a success story

WSPS alignment to education shift

Growth Mindset @ WSPS



Developing passionate learners with exemplary character

Instilling positive routines for students to develop good habit of respectful behaviour and responsible care for environment

G.E.A.R. - Setting the tone for a positive experience
U.P. - Useful Practices to set the routine for learning

1. **G**reet
2. **E**nvironment: Everyday Responsibility
3. **A**ttendance, **A**ttire check & **A**ttention
4. **R**eview & **R**eject on Learning



Purposeful programmes e.g. P5-P1 Buddy Programme to instil care and responsibility in White Sandians

Every White Sandian, a success story



WSPS alignment to education shift

Providing a caring and enabling environment for joyful learning

Growth Mindset @ WSPS



Collaborative learning through effective communication as confident learners



First Days Of School - Fostering positive Teacher-Student Relationships & Peer Relationships

Every White Sandian, a success story



WSPS alignment to education shift

Growth Mindset @ WSPS



Enhancing students' resilience in support of their well-being

What are you worried about as you start the new year?
[Choose as many as you like.]

- Difficulty making new friends
- Not getting along well with friends
- Learning new subjects/skills
- Too much schoolwork
- Not meeting my own expectations
- High expectations from parents/teachers
- Quarrels at home
- Money issues at home
- I am not worried about anything



You are not alone! Please talk to your parents and teachers if you need to speak to someone.

Praise and affirmation as a strategy to develop students' Growth Mindset

Termly Check-in Surveys



Heart-to-heart Conversations



Every White Sandian, a success story

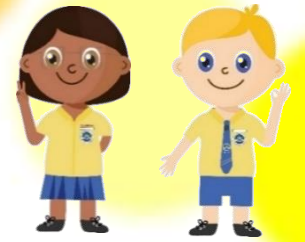


PSLE Scoring and Posting System *(since 2021)*

Every White Sandian, a success story



PSLE Scoring System



AL scores for subjects in:

Standard Level

Foundation Level

AL	Raw mark range
1	≥90
2	85-89
3	80-84
4	75-79
5	65-74
6	45-64
7	20-44
8	<20

Grades for Foundation subjects	Foundation raw mark range	Equivalent Standard level AL
A	75-100	6
B	30-74	7
C	<30	8



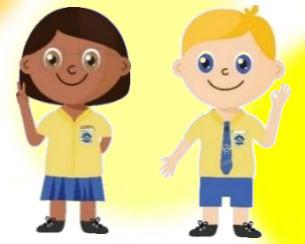
Official (Open / Non-sensitive)

Every White Sandian, a success story



PSLE Scoring System

Secondary School HMTL Criteria



Eligibility Criteria for Sec School HMTL

- An **overall PSLE Score of 8 or better**

OR

- An **overall PSLE Score of 9 to 14 (inclusive); and attained AL 1 / AL 2 in MTL or Distinction / Merit in HMTL**

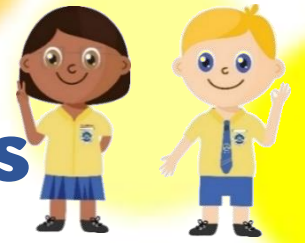


Official (Open / Non-sensitive) *Every White Sandian, a success story*



PSLE Scoring System

MTL Exemption & Asian /Foreign Languages



Pupils exempted from MTL, due to extenuating circumstances, will be assigned an MTL score between AL 6 to 8 so they have a PSLE score comprising four subjects, for the purposes of S1 Posting.

Their assigned MTL score will:

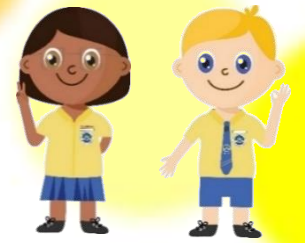
- Take reference from peers with similar scores for English, Mathematics, and Science.
- Maintain parity of treatment with students who take Foundation MTL (who will score between AL 6 to 8)



Every White Sandian, a success story



PSLE Posting System (starting with 2024 Sec 1 cohort)




Changes to Secondary 1 posting

- Starting from the 2024 Sec 1 cohort, Pri 6 students will be admitted to Sec 1 through three posting groups
- Posting groups are assigned based on PSLE scores, mapped from existing PSLE score ranges for Express, N(A) and N(T) streams

PSLE Score	Posting Group	Subject level for most subjects
4-20	3	G3
21 and 22	2 or 3	G2 or G3
23 and 24	2	G2
25	1 or 2	G1 or G2
26 - 30 (with AL 7 in EL and MA)	1	G1

Infographic: Rafa Estrada Source: Ministry of Education, Feb 28, 2023





Full Subject-Based Banding (SBB)

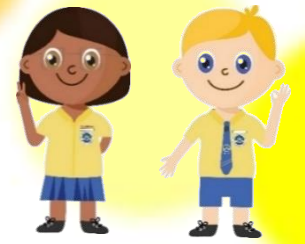
(for all secondary schools from 2024)



Every White Sandian, a success story



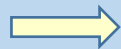
Full Subject-Based Banding (Full SBB)



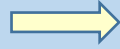
Full SBB is part of MOE's ongoing efforts to nurture the joy of learning and develop multiple pathways to cater to the different strengths and interest of our students.

FULL SBB TIMELINE

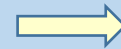
2020



2021



2022 –
2024



2027



2028

- Start of Full SBB in 28 Sec Schools

- First cohort of P6 pupils undergo new PSLE scoring and Sec 1 (S1) posting system

- Progressive roll-out of Full SBB to more Sec Schools

- First cohort of pupils to sit for a common national examination, and receive a common national certification

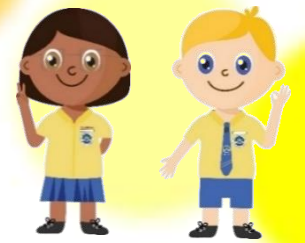
- First cohort of students to be admitted to Post-Sec Education Institutes (PSEIs) under revised admissions criteria



Every White Sandian, a success story



What are the changes in Full SBB?



1. Removal of Express, Normal (Academic) and Normal (Technical) courses

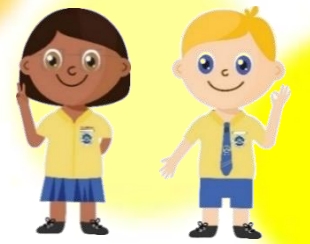
- From 2024, the Express, N(A) and N(T) courses will be removed.
- Pupils will continue to be posted into Sec Schools through the 3 scoring bands. Details will be shared at a later date.
- Throughout their secondary school education, pupils can take subjects at **three subject levels, known as G1, G2, G3** (G stands for General), mapped from today's N(T), N(A) and Express standards respectively.



Every White Sandian, a success story



What are the changes in Full SBB?



2. Mixed Form Classes at Lower Sec

- Pupils will be grouped into **mixed form classes**, with each form class **comprising students of different learner profiles**.



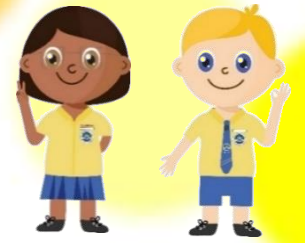
Every White Sandian, a success story

Direct-School Admission (DSA)

Every White Sandian, a success story



Direct School Admission – Secondary (DSA – Sec)



Nurturing Aptitudes & Enhancing Access to Opportunities

Recognising Talents and Achievements

- Direct School Admission (DSA) places will be increased. From 2018, all secondary schools will offer up to 20% of their non-IP places through DSA.
- By 2018, schools will stop using general academic ability tests for DSA selection.
- From 2019, DSA applications can be made via a common portal.

Two ways of seeking admission into Secondary 1:

- **Sec 1 (S1) Posting Exercise**
 - After PSLE results release
- **Direct School Admission (DSA)–Sec Exercise**
 - Application starts in April - May



Every White Sandian, a success story

Home-school Partnership

Every White Sandian, a success story

Home-school partnership

**Spend Time Chatting.
Use T.A.D.**

Talk

Talk about things that friends might pressure him/her to do, which can be harmful.

E.g. risky dares; deciding to meet an 'online friend' in person; making online purchases

Ask

Ask your child about interests he/she would like to explore, and what he/she needs to do to develop them.

E.g. make time for practice, sign up for courses/lessons

Discuss

Discuss a variety of occupations that your child may be interested to explore.

E.g. chef, interior designer, housing agent.



Signs of S.T.R.E.S.S.

Your child may be overwhelmed if they show a combination of the following:

- Struggles to pay attention to studies or activities
- Tiredness, loss of appetite and sleep
- Rebellious streak
- Excuses to miss school/class
- Stays away from others
- Sulking



Common challenges faced by Primary 5 students

**Increased academic
rigour**

**Peer relationships
(new friends and dynamics)**

**Learning to manage
biological differences/
emotional changes**

**Coping with parents'
expectations and
commitment stipulated
by parents**



Frequently Asked Questions

Curriculum & assessment

- Preparation for PSLE
- How to perform well with increased difficulty level?

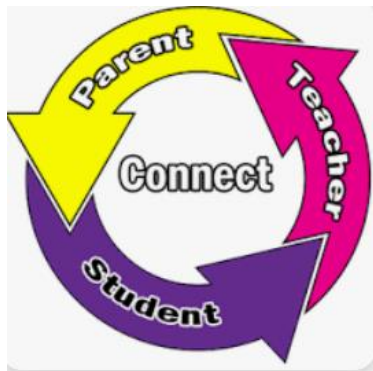
Support for child's well-being & academic learning

- Remediation Programmes
- Small-group Intervention Programmes
(StarGRIT!, We can learn!, Befriender, Student Haven)





White Sands TEAM



Every White Sandian, a success story

